



---

**Asking Price £190,000 Leasehold**

**1 Bedroom, Apartment - Retirement**

25, Tyrell Lodge 100 Springfield Road, Chelmsford, Essex, CM2 6JA

 **0800 077 8717**

 **sales@churchillsl.co.uk**

 **churchillsl.co.uk**

**Churchill**  
**Sales & Lettings**  
Retirement Property Specialists



# Tyrell Lodge

Tyrell Lodge is a development of 39 one and two bedroom retirement apartments situated in the City centre of Chelmsford. All the essential amenities are within walking distance and the pedestrianised High Street has most well known chain stores.

Hylands House, built in 1730, has restored interiors and hundreds of acres of parkland. The medieval Chelmsford Cathedral features stained glass and a colourful ceiling. The Essex Regiment Museum displays military artefacts such as weaponry, medals and uniforms. To the southeast, RHS Garden Hyde Hall has hilltop views and includes a rose garden and woodland garden.

Chelmsford is easily accessible by road and is located on the main traffic arteries of the A12, A130 and A414 via the M25 Junction 28. There are regular buses into and around the neighbouring towns and Chelmsford train station is situated on the London main line from Liverpool Street, London.

Tyrell Lodge's manager is on hand throughout the day to support the residents and keep the development in perfect shape. They arrange many regular events in the Owners' Lounge from coffee mornings to games afternoons.

A Guest Suite is available for your friends and family to stay in. In addition, you are entitled to use of the Guest Suites at all Churchill Living developments across the country. Prices are available from the Lodge Manager.

Tyrell Lodge has been designed with safety and security at the forefront. The apartment has an emergency Careline system installed, monitored by the onsite Lodge Manager during the day and 24 hours, 365 days a year by the Careline team. Careline integrated intruder alarm, secure video entry system and sophisticated fire and smoke detection systems throughout both the apartment and communal areas provide unrivalled peace of mind.

Tyrell Lodge is managed by the award winning Churchill Estates Management, working closely with Churchill Living and Churchill Sales & Lettings to maintain the highest standards of maintenance and service for every lodge and owner.

Tyrell Lodge requires at least one apartment resident to be over the age of 60 with any second resident over the age of 55.



0800 077 8717



sales@churchillsl.co.uk



churchillsl.co.uk



# Property Overview

## \*\*ONE BEDROOM FIRST FLOOR RETIREMENT APARTMENT\*\*

Welcome to Tyrell Lodge! Churchill Sales & Lettings are delighted to be marketing this lovely one bedroom first floor apartment overlooking the communal gardens. The property offers deceptively spacious accommodation throughout and is presented in good decorative order.

The living room offers ample space for living and dining room furniture. A window provides lots of natural light as well as lovely views of the communal gardens.

The kitchen is accessed via the Living Room and offers a range of eye and base level units with working surfaces over and tiled splashbacks. There is a built in waist height oven, 4 ring electric hob with extractor hood over, a fridge, a freezer and a dishwasher. A window allows for light and ventilation.

The bedroom is a generous double room with a useful built in mirrored wardrobe and plenty of space for additional bedroom furniture if required.

The modernised shower room offers a large walk in shower with handrails, a heated towel rail, WC and wash hand basin with vanity unit beneath.

Perfectly complementing this wonderful apartment is a useful storage cupboard located in the hallway.



# Features

- One bedroom first floor apartment
- Overlooks the communal gardens
- Fully fitted kitchen with integrated appliances
- Lodge manager available 5 days a week
- Owners lounge & Kitchen with regular social events
- 24 Hour Careline system for safety and security
- Owners private car park
- Great location close to the city centre & excellent transport links
- A Guest Suite is available for your friends and family to stay in. In addition, you are entitled to use of the Guest Suites at all Churchill Retirement Living developments across the country.





# Key Information

Service Charge (Year Ending 31st May 2026): £2,541.13 per annum.

Ground Rent: £855.56 per annum. To be reviewed in May 2029

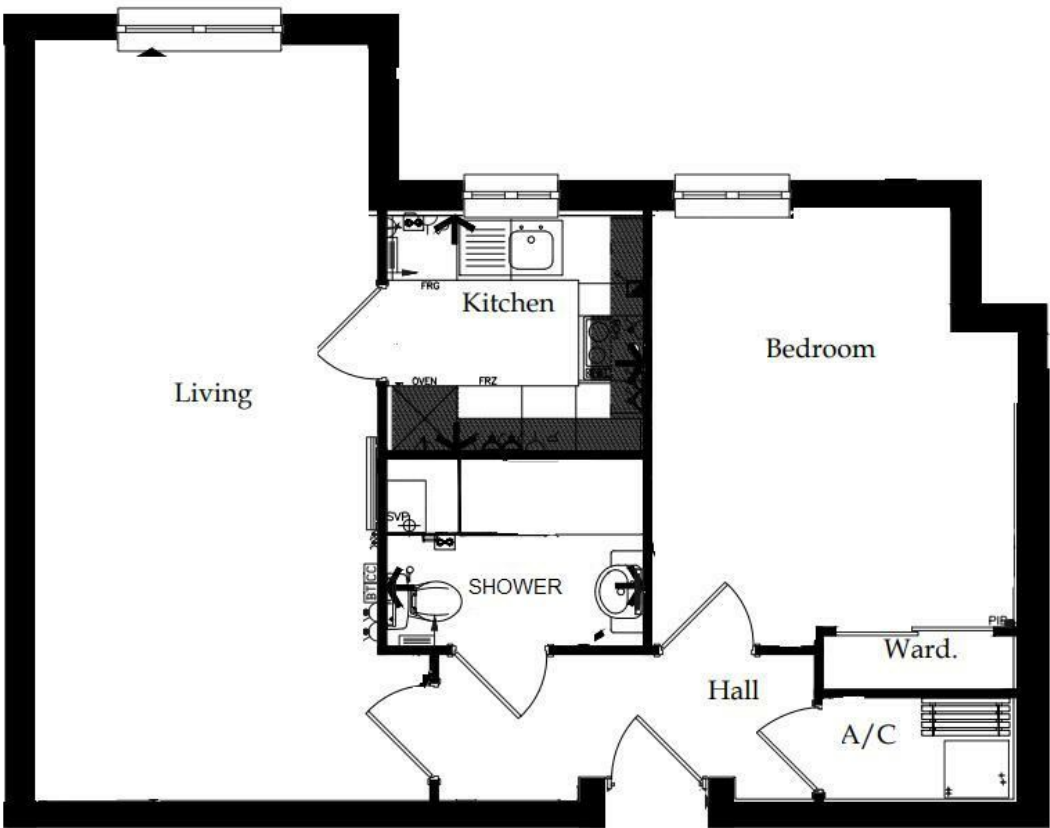
Council Tax: Band D

125 year Lease from 2007

Please check regarding Pets with Churchill Estates Management. Any consents given in relation to pets are subject to the terms of the lease and any further rules and regulations made by Churchill Estates Management

Service charges include: Careline system, buildings insurance, water and sewerage rates, communal cleaning, utilities and maintenance, garden maintenance, lift maintenance, lodge manager and a contribution to the contingency fund.

EPC Rating: B



Living	Width 11'-11" [3620]	max	Length 22'-10" [6959]	max
Kitchen	Width 7'-10" [2380]	max	Length 7'-2" [2175]	max
Bathroom	Width 5'-8" [1731]	max	Length 7'-10" [2380]	max
Bedroom 1	Width 11'-0" [3352]	max	Length 13'-1" [3990]	max

DESCRIPTION Measurements are approximate and some may be maximum on irregular walls.

CONSENTS We have not had sight of any relevant building regulations, guarantees or planning consents. All relevant documentation pertaining to this property should be checked with your legal advisor before exchanging contracts.

Property Particulars Disclaimer: These particulars are intended only as general guidance. The Company therefore gives notice that none of the material issued or visual depictions of any kind made on behalf of the Company can be relied upon as accurately describing any of the Specified Matters prescribed by any Order made under the Consumer Protection from Unfair Trading Regulations, 2008. Nor do they constitute a contract, part of a contract or a warranty.





☎ 0800 077 8717

✉ [sales@churchillsl.co.uk](mailto:sales@churchillsl.co.uk)

🌐 [churchillsl.co.uk](http://churchillsl.co.uk)

**Churchill**  
Sales & Lettings  
Retirement Property Specialists